
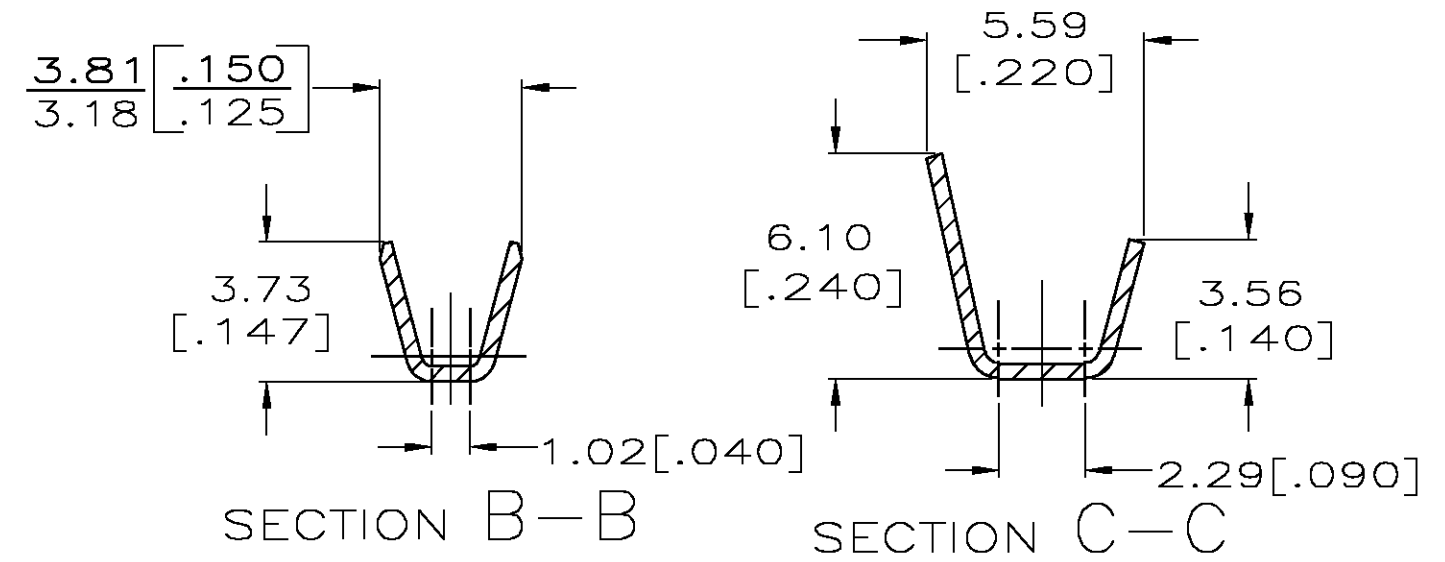
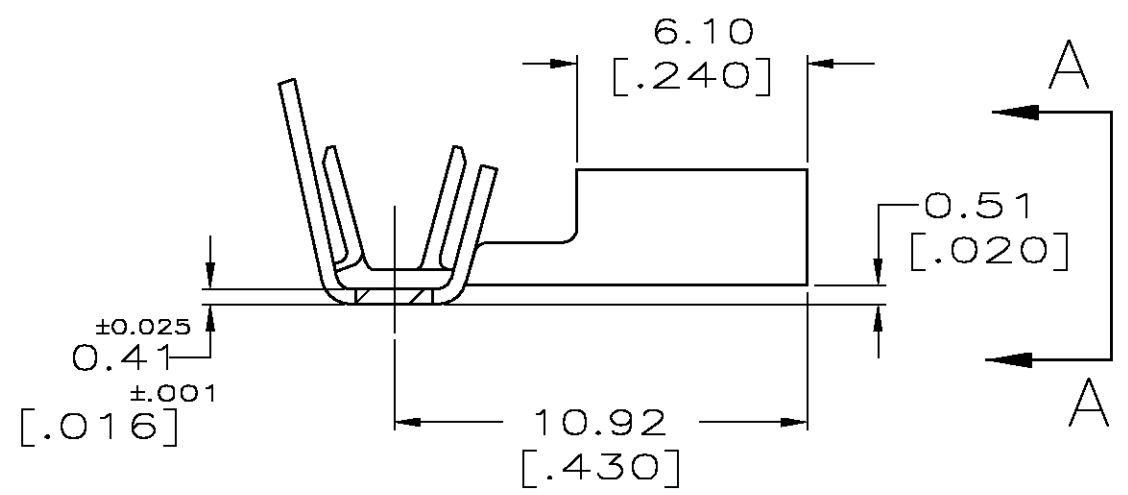
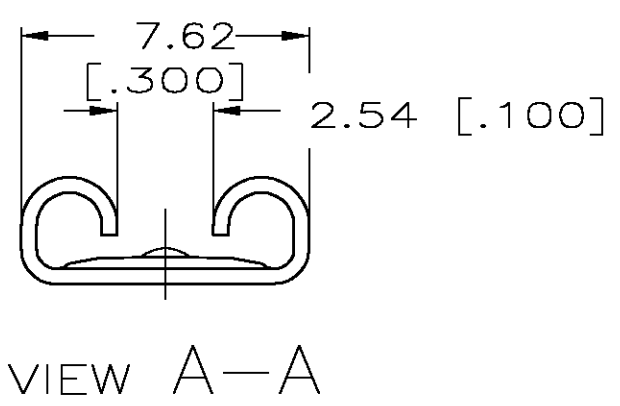
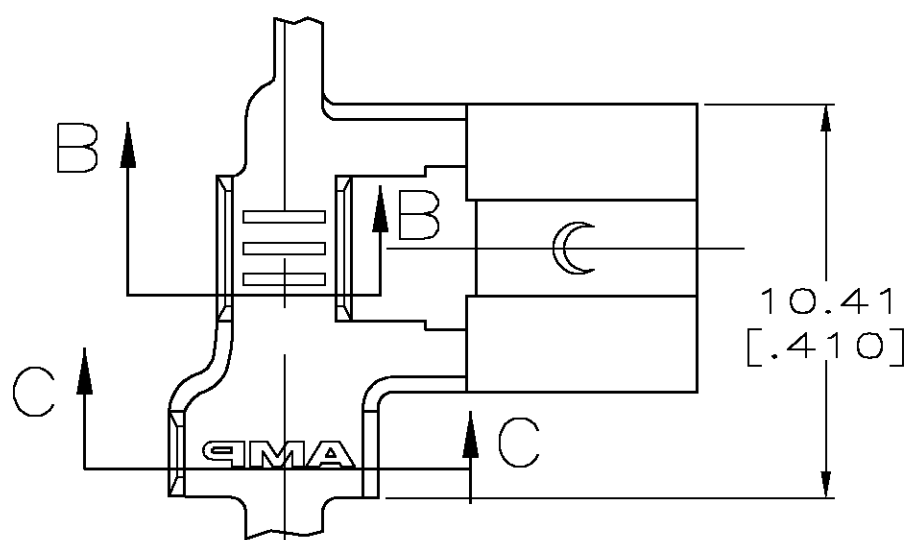
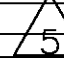



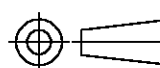
THIS DRAWING IS UNPUBLISHED. RELEASED FOR PUBLICATION  
 © COPYRIGHT BY TYCO ELECTRONICS CORPORATION. ALL RIGHTS RESERVED.

| LOC | DIST | REVISIONS |     |                      |         |     |      |
|-----|------|-----------|-----|----------------------|---------|-----|------|
|     |      | P         | LTR | DESCRIPTION          | DATE    | DWN | APVD |
| AF  | 50   |           | L   | REV PER 0G3A-0896-04 | 11NOV04 | JR  | PD   |

- CONTINUOUS STRIP ON REELS.
- WIRE SIZE IS 0.6-2.0mm [18-14] AWG.
- INSULATION RANGE IS 2.79-4.06 [.110-.160] DIA.
- MATING TAB THK IS 0.81±0.025 [.032±.001].
-  SPECIAL PACKAGING QUANTITY



|          |                 |   |
|----------|-----------------|---|
| OBSOLETE | .000080 MIN TIN |  63012-3 |
|          | .000080 MIN TIN | 63012-2   |
|          | -               | 63012-1   |
|          | PLATING         | PART NO.  |

|   |  |                            |   |                    |
|---|--|----------------------------|---|--------------------|
| THIS DRAWING IS A CONTROLLED DOCUMENT.  |  | DWN<br>JR RUTH<br>4/8/91   |  Tyco Electronics Corporation<br>Harrisburg, Pa 17105-3608 |                    |
| DIMENSIONS:<br>MM [INCHES]  |  | CHK<br>MS FEHER<br>4/8/91  |   |                    |
| TOLERANCES UNLESS OTHERWISE SPECIFIED:<br>0 PLC ± -<br>1 PLC ± -<br>2 PLC ± -<br>3 PLC ± 0.38 [.015]<br>4 PLC ± -<br>ANGLES ± - |  | APVD<br>C MEYERS<br>4/8/91 | NAME<br>RECEPTACLE, FASTON,<br>FLAG, 6.35 [.250] SERIES   |                    |
|    |  | PRODUCT SPEC<br>-          | APPLICATION SPEC<br>-   |                    |
| MATERIAL<br>4M BRASS  |  | FINISH<br>SEE TABLE        | WEIGHT<br>-   | RESTRICTED TO<br>- |
| CUSTOMER DRAWING  |  |                            | SIZE<br>A3  | CAGE CODE<br>00779 |
|   |  |                            | DRAWING NO<br>C-63012   | REV<br>L           |
|   |  |                            | SCALE<br>5:1  | SHEET<br>1 OF 1    |